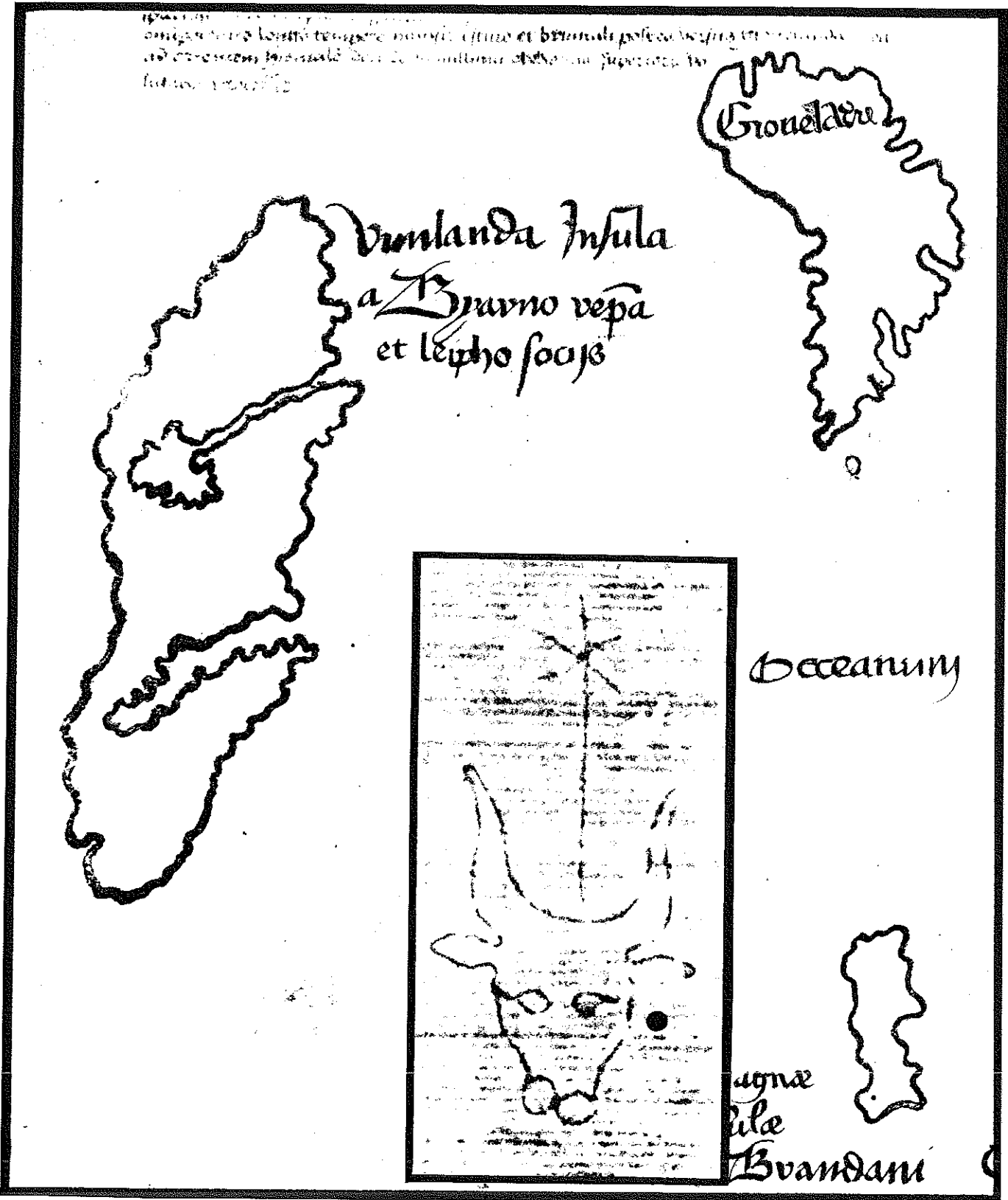
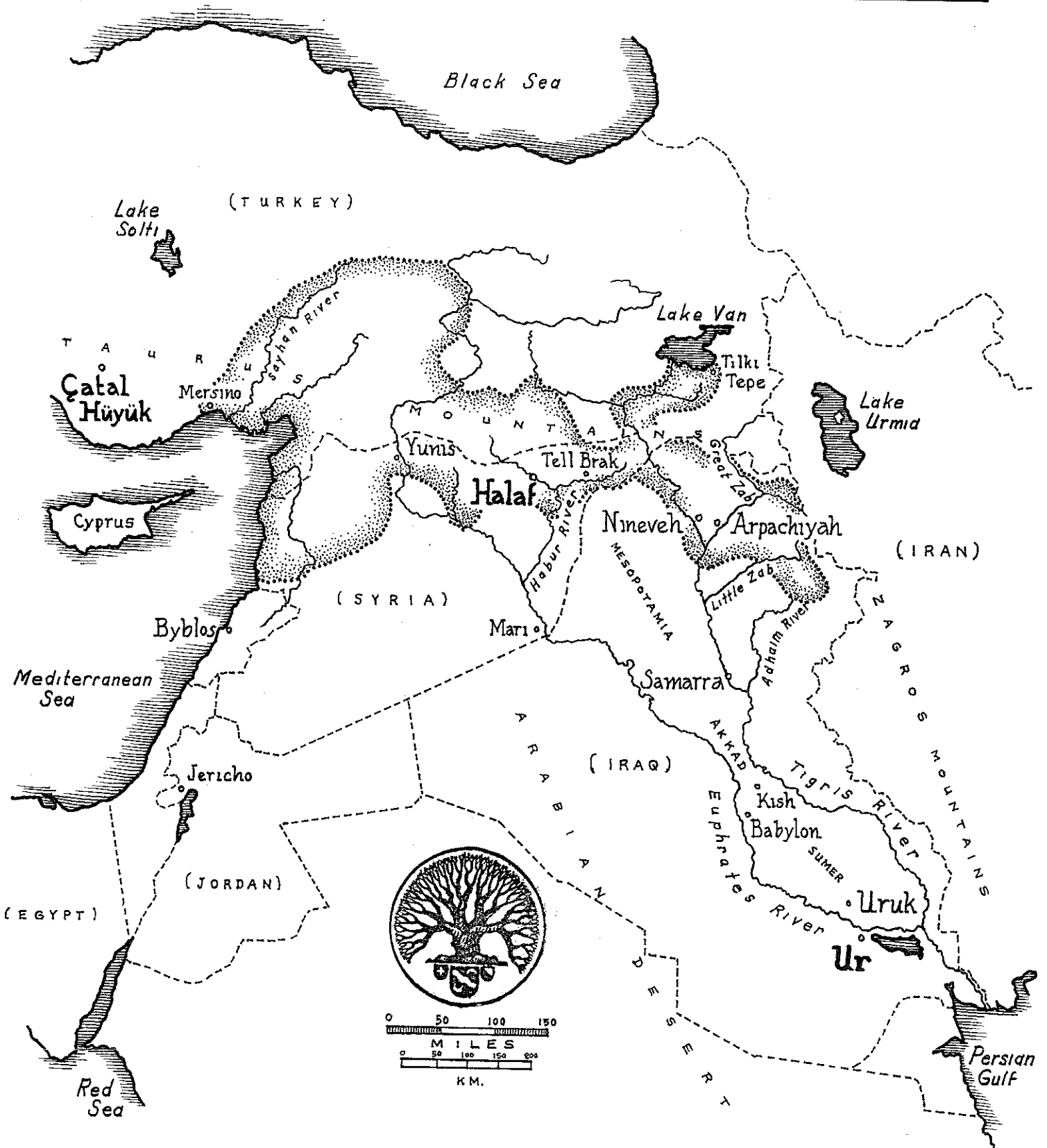


THE MOVEMENT OF PREHISTORIC PEOPLES
 THROUGH EUROPE'S CENTRAL ALPINE REGION



THE VINLAND MAP & ITS BULL HEAD WATERMARK
 PROVING A EUROPEAN ARRIVAL IN THE NEW WORLD BEFORE COLUMBUS, SOON REFUTED, BUT NOW REPROVEN



THE FERTILE CRESCENT

